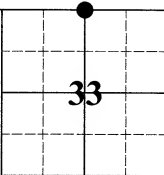
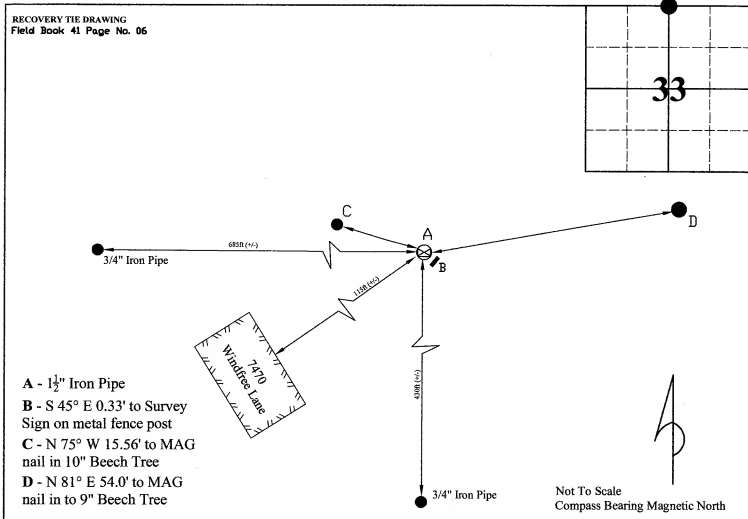


MONUMENT RECORD
State of Indiana - County of Monroe

Section: 33 **Township:** 8 North **Range:** 1 East **Corner ID:** SaCr K-21

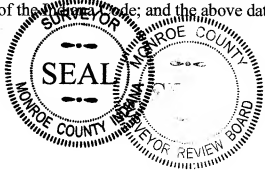
Monument Description & Remarks: 1½" pinched Iron Pipe. Survey Sign 4ft above ground at pt. B

References On File: Ray Graham survey, Windfree Estates (1969), on file in Recorder Office cabinet B, envelope 138



I, Kevin P. Enright, Monroe County Surveyor, hereby certify that this document was prepared under my direction in accordance with the provisions of section 36-2-12-11 of the Indiana Code; and the above data is given under my hand and seal this 4th day of December, 2008.

Kevin P. Enright



Administered by the Monroe County Surveyor Review Board

Date: 3-16-2009